

EVOSWITCH | SPECIFICATIONS





About EvoSwitch

EvoSwitch is a carrier and a climate-neutral datacenter in the Amsterdam region. We provide ample space for organizations that are looking for a professional, reliable and safe environment for outsourcing IT infrastructure. We have a large power capacity limit, but we limit our energy consumption and ensure full compensation for CO2 emissions in cooperation with Climate Neutral Group (www.climateneutralgroup.com).

Energy consumption in datacenters is a serious issue. In order to tackle the rising demand for electricity, taking control of your energy bills and taking our mutual environmental responsibility, EvoSwitch has developed an energy-efficient datacenter.

To reveal to the world that your IT infrastructure is green, EvoSwitch has developed the green label called The Green Fan (www.thegreenfan.com). For end users this is a guarantee that the collective IT infrastructure is supplied in an efficient but primarily environmentally friendly manner.



Location details

Address	J.W. Lucasweg 35 2031BE, Haarlem The Netherlands
Telephone	+31 20 3165170
Fax	+31 20 3165177
Mail	info@evoswitch.com
Website	www.evoswitch.com
Summary	Next generation datacenter facility that is located near Amsterdam, within the commercial area 'Waarderpolder' of the city of Haarlem.

The Facility

Building structure	3 storey concrete and steel structure with prefabricated concrete and steel panel façade, no windows except for offices.
Completion date	Q1 2007
Total size of the facility	9.285 m ²
Equipment floor space (present)	4.000m ²
Equipment floor space (expansion)	>5.000m ² in October 2010 (more building space available)
Office space	1.000 m ²
Storage space	1.500 m ²
Roof space	6.500 m ²
Parking space (secure)	3.000 m ²
Accessibility	19 km from Schiphol Airport 19 km from Amsterdam city centre 500m from highway (A5/A9) 500m from railway station
Loading / unloading	Loading (truck) bay and direct access to rooms, goods lift of 4.000 kg capacity.
Minimum floor to ceiling clearance	2900mm
Maximum floor load	1500kg/m ²
Maximum roof load	500kg/m ²
Minimum raised floor void	640- 800 mm



Power	
Power supply	40 MVA
Transformers	8 x 2500 KVA
Power distribution	230V / 400V AC (2N), distributed via dual independent circuits to rack level.
Power	Supports currents up to 32A (3 phase) per rack. High Density solutions possible on request.
UPS system (present)	1 x 1600 KVA + 3 x 2400KVA static UPS (upgradeable)
Diesel Gensets (present)	14 x 1540 KVA paired diesel gensets N+1 (upgradeable)
Supply for generators	>72 hours emergency power of diesel stored on site. SLA with fuel supplier to deliver additional diesel fuel within 4 hours.

Environment Control	
Air conditioning	ACU's for data rooms. Free cooling concept.
Capacity	Average 2,5KW / m ² . Maximum 5KW / m ² . High Density solutions possible on request.
Chilled water generation	2N+2 ACU's in data rooms, 2N+2 pumps, 2N chilled water loops.
Heat disposal	Dry chillers on roof (2N+1 redundant).
Temperature	24°C (+/- 5°C)
Relative Humidity	50%
Racks	Cold corridor concept
High density	Up to 35 kW per rack possible on request. Customized solutions.

Fire Protection	
Fire detection system	VESDA System (Very Early Smoke Detection Apparatus).
Fire suppression system	Argonite gas automatic fire suppression system in the equipment rooms.
	180min Fire-resistant walls Optical airstream- and heat detectors. Portable CO2 fire extinguishers

Building Management Systems	
Building monitoring	Central computerized monitoring systems
Alarm management	All alarms monitored 24 x 7 x 365



Security

Security systems	<p>CCTV cameras (inside and outside)</p> <p>Zoned access control key card system with man-traps.</p> <p>Outer doors are alarmed.</p> <p>Biometric scan (fingerprint & facial)</p> <p>Guards on-site</p> <p>Visitors are escorted within the building.</p> <p>Intrusion detection systems.</p> <p>Access list</p>
24 x 7 x 365 services	<p>Guards on-site</p> <p>Monitoring</p>
Physical barriers	<p>Perimeter fencing</p> <p>Shielded guard lodge</p> <p>Ground floor 1+ meter above terrain (as well as all access doors).</p>
Entrance	<p>Biometric scan (fingerprint & facial)</p> <p>Electronic ID scan (passport)</p> <p>Zoned access control key card</p>

Connectivity

External routing	<p>Diverse routing via ducts entering the building from 3 different sites. Cables are routed securely to the ODF in the MMR.</p>
Internal routing	<p>All cabling is anonymous and controlled by EvoSwitch.</p> <p>Cable infrastructure is maintained in an up-to-date database.</p>
Fibers (some in vicinity)	<p>BT, Colt, Ziggo, Enertel, Eurofiber, FiberRing, Global Crossing, KPN, MCI/Verizon, Priority, Tele2, UPC.</p>
Carriers	<p>BT, Cogent, Colt, Deutsche Telekom, FiberRing, Eurofiber, Global Crossing, Interoute, KPN, Relined, Tele2, Telecom Italia, Teleglobe/VSNL, TeliaSonera</p>
IXP's	<p>NL-IX, AMS-IX (via Metro), NDIX</p>

Support

Standard	<p>Rack installation</p> <p>24 x 7 x 365 on-site engineering</p> <p>Remote hands</p>
Advanced	<p>Router / switch configuration</p> <p>Server OS installation & troubleshooting</p> <p>SAN installation & troubleshooting</p> <p>Database installation & troubleshooting</p>

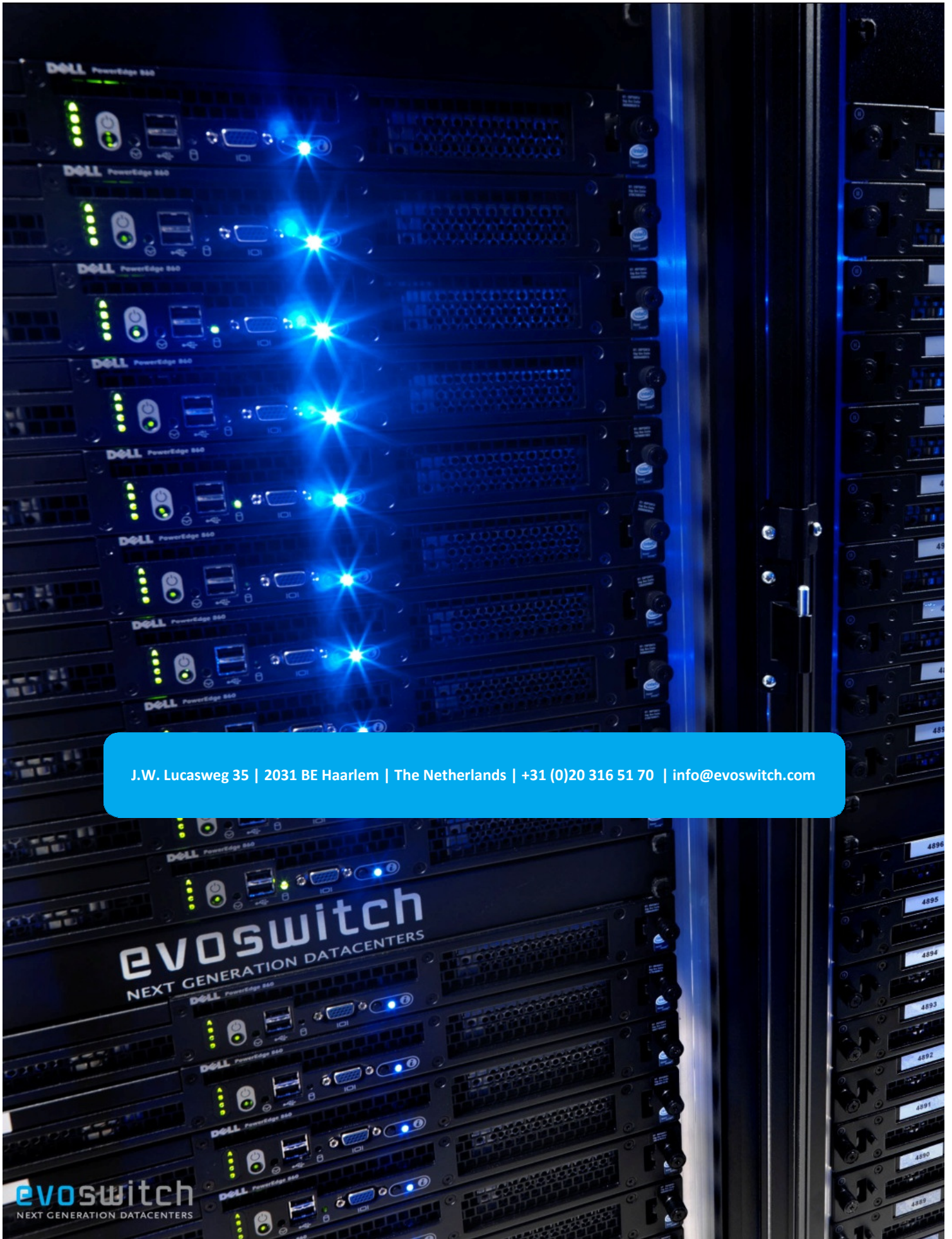




Environmental concerns	
Energy	All energy used is 'green' energy. Only renewable energy sources have been used to generate this energy.
Cooling	Cooling is based on free cooling concept and cold corridors which saves 30% annually in cooling energy.
Waste	All waste is being separated on site.
Energy saving measures	Free cooling ACU's, Cold corridors, Delta conversion on UPS, Solar panels, High-Frequency sensory lighting, recycling of heat dissipation from equipment floor (office / storage / preheat gensets).
Customer incentives	Green invoicing system stimulates customers to save energy. Website logo The Green Fan available for customers to demonstrate green credentials to the general public.
Social responsibility	EvoSwitch is member of The Green Grid and neutralizes CO2 emissions (from gensets and car park) through the Climate Neutral Group.

Certification	
Physical security control objectives, processes, procedures and controls	ISO/IEC 27001:2005 ISO 9001:2008 PCI DSS NEN3140 SAS70 in progress
Environmental management	ISO 14001 certification process pending and expected to be received in 2010





J.W. Lucasweg 35 | 2031 BE Haarlem | The Netherlands | +31 (0)20 316 51 70 | info@evoswitch.com